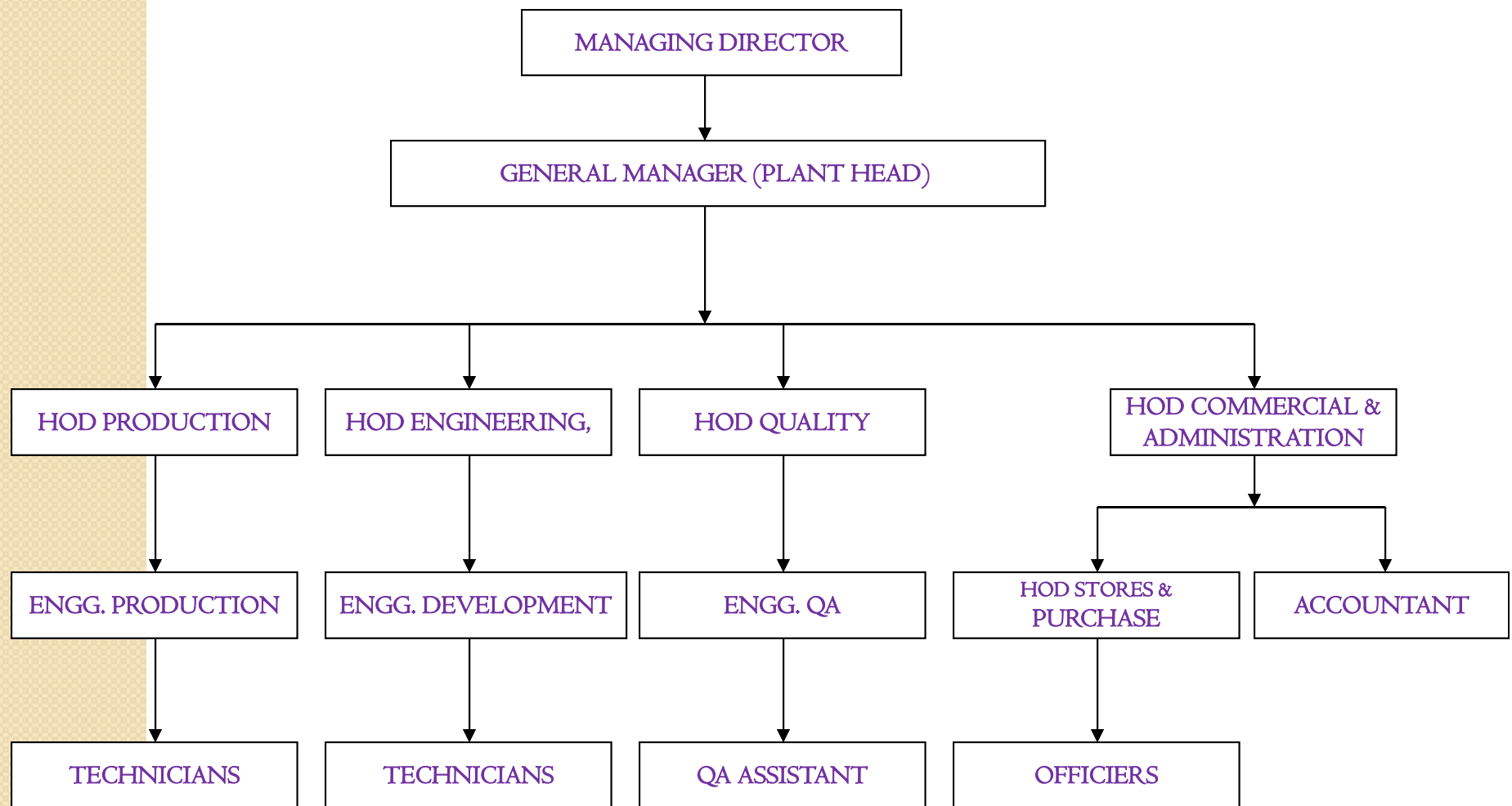




- 1983- Datsons Engg. Works established. Area – 3000 Sq Mtr
- 1984- Started Supply to TATA motors
- 1997 – Started Supply to Toyota
- 2000 – Become ISO 9001-2000 Certified Company
- 2004- Started exports to Mexico to GE Electrical.
- 2004- Commenced Tool room with latest softwares
- 2006- Started supplying to Bele Drain Systems GmbH,Austria
- 2006 – Become TS I6949 Certified Company
- 2009- Establish new facility at Chakan with 4.5 acrs land.
- 2009- Diversification into non-auto products.
- 2010- Changed to Pvt. Ltd. Company.
- 2011- Started export to Tenneco- Spain, KYB- Spain and Lucy Switchgears-Dubai
- 2013 – Started Supplying Disk Brakes for 2 Wheelers.

# ORGANISATION CHART



## *QUALITY POLICY*

- We, at Datsons Engineering Works Pvt. Ltd. , Pune are committed to grow in our business by achieving total customer satisfaction by consistently providing products and services that meet customer requirements effectively.
- This will be achieved through continual improvement in our process and enhancement of skills of workforce while conforming to International Standard TS 16949



We were ISO 9001 : 2000 certified since 2000 and we got **TS 16949 certification** in Oct-06.

In 1997, our Company received "**Self Certification**" from Tata Motors and we were given the go ahead for **DSL (Direct supply To Line)** and **Milk Route (Customer's Vehicle Picking up goods as per daily requirements – (JIT))**.

Also we have been awarded **CQ (Certified Quality)** by:

- Mahle Filter Systems (India) Pvt Ltd
- Yutaka Auto.Comp. Ltd



# AWARDS & ACHIVEMENTS



A Highly Prestigious Feather in our Cap  
Awarded to us by Maharashtra Chamber of commerce



Best Supplier for Cost Performance



Best Supplier for New Component Development



# *TELEVISION INTERVIEW*

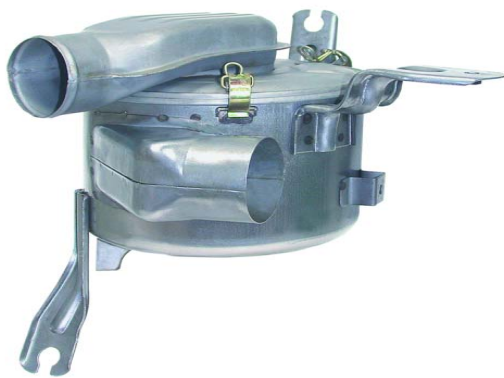
FOUNDER AND MANAGING DIRECTOR OF THE COMPANY HAS BEEN INTERVIEWED ON 12<sup>TH</sup> MARCH 2011 AT TELEVISION PROGRAMME. THE ABOVE PROGRAMME IS ON ENTREPRENEURSHIP SKILLS. THE GROWTH OF THE MANAGING DIRECTOR AND THE COMPANY HAS BEEN REVIEWED.

## *Plant- I*

- *PRODUCTS*
- *CUSTOMERS*
- *MACHINERIES*
- *FACILITIES*

*MFG. OF PRESS PARTS AND WELDED  
ASSEMBLIES*





**Application of Products**



Customer :-

Mahle Filters Systems Pvt. Ltd.  
(ANAND GROUP)

Application : **TOYOTA ( Qualis)**

***Air Filter Assembly***



- Gabriel India Ltd. (Anand Group)
- Tenneco Automotive
- Endurance Magneti Marelli

**(We supply shock absorber peripheral Parts and assembly )**

Application : Indica / Indigo / Vista/  
Nano, Penguin, Fiesta, Icon,  
Nissan- Micra, X11M, Punto,  
Maruti SX4, YE3, M & M XUV 500,  
Maxima, Renault Logan, W09, H79

**Shock Absorber assembly & peripheral Parts**





Customer :-  
YUTAKA Auto Comp Ltd. (Faurecia)

Tenneco Emission Control

Application : **TATA MOTORS**  
( Indica / Indigo/ Sumo/ Safari 2.2i, ARIA)  
HONDA (City ), GM SII, Daimler

**Catalytic Converter / Exhaust System Assembly Peripherals**





Customer :-

Tenneco automotive (i) Pvt Ltd.

Application : **MAHINDRA & MAHINDRA  
PROJECT –W201 ( XUV 500 EXPORT)**

Customer :-

YUTAKA Auto Comp Ltd. (Faurecia)

Application : **TATA MOTORS**  
(These are used in Exhaust systems as Heat Shields)

**Exhaust System Heat Shields**



**Customer :-**  
**YUTAKA AUTOCOMP LTD.**

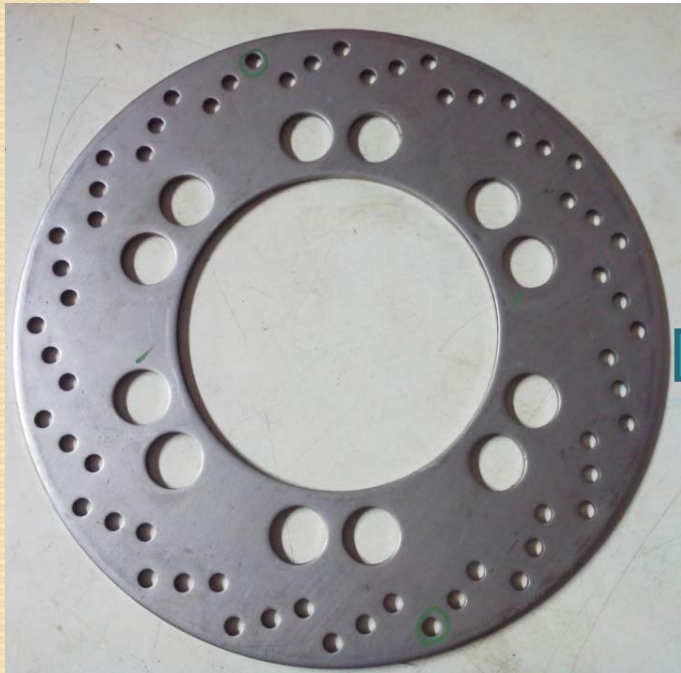
**Application : HONDA –**  
**UNICORN/ SHINE/ KARIZMA/ CBZ**

**Brake Disk**

**Customer :-**

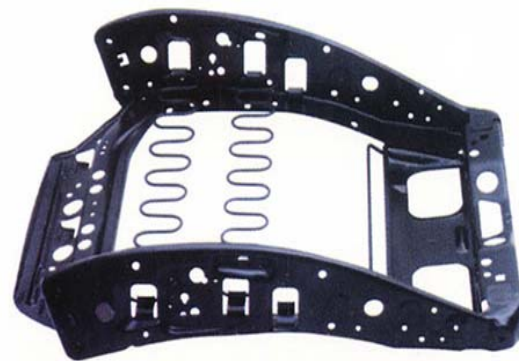
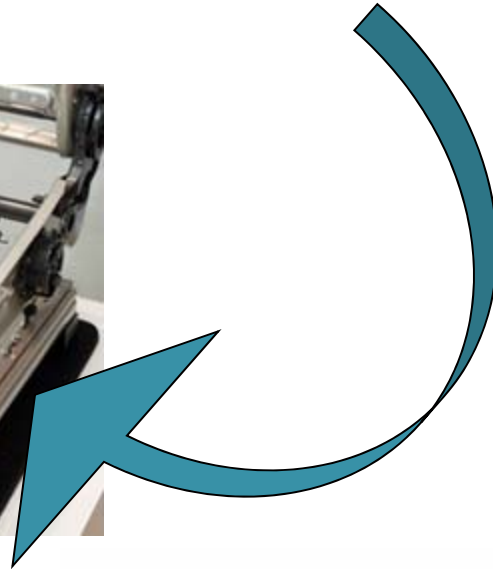
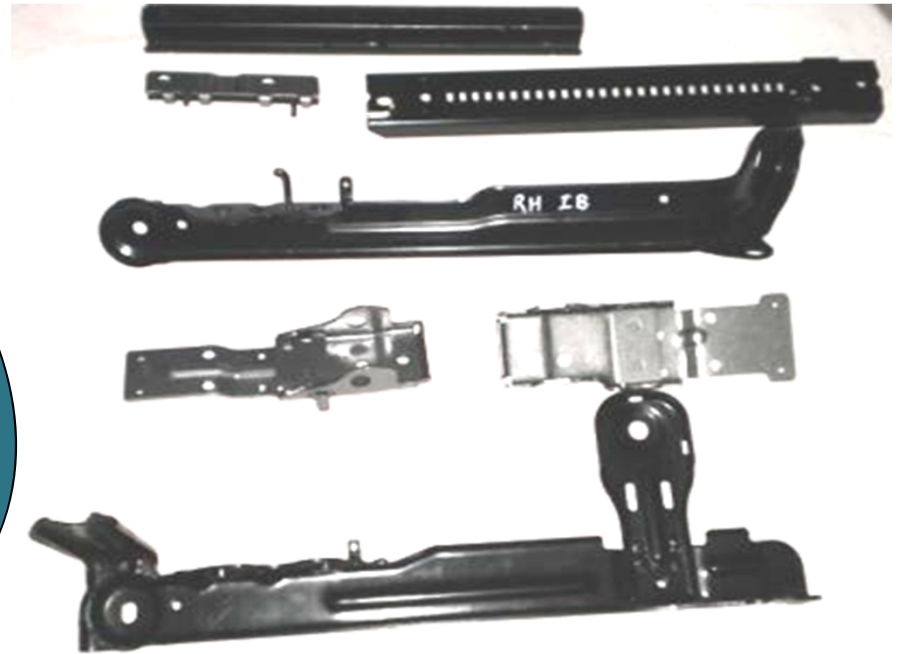
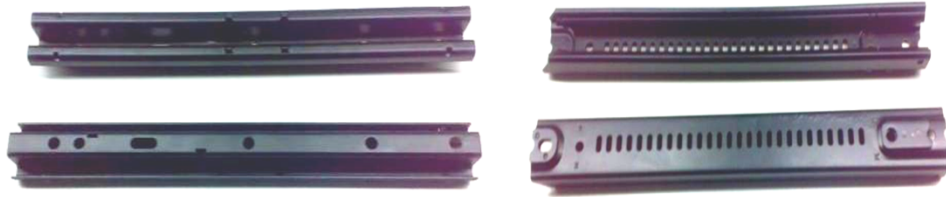
**BREMBO BRAKE INDIA PVT LTD.**

**Application : ROYAL ENFIELD**



**Brake Disk**





Customer :-

Lear Automotive

**Mahindra Xylo, TML Arya,  
Nissan MICRA**



Customer :-

Sujan Cooper standard Avs Pvt Ltd

Application : Mahindra & Mahindra

XUV 500



**Engine Mounting Parts**



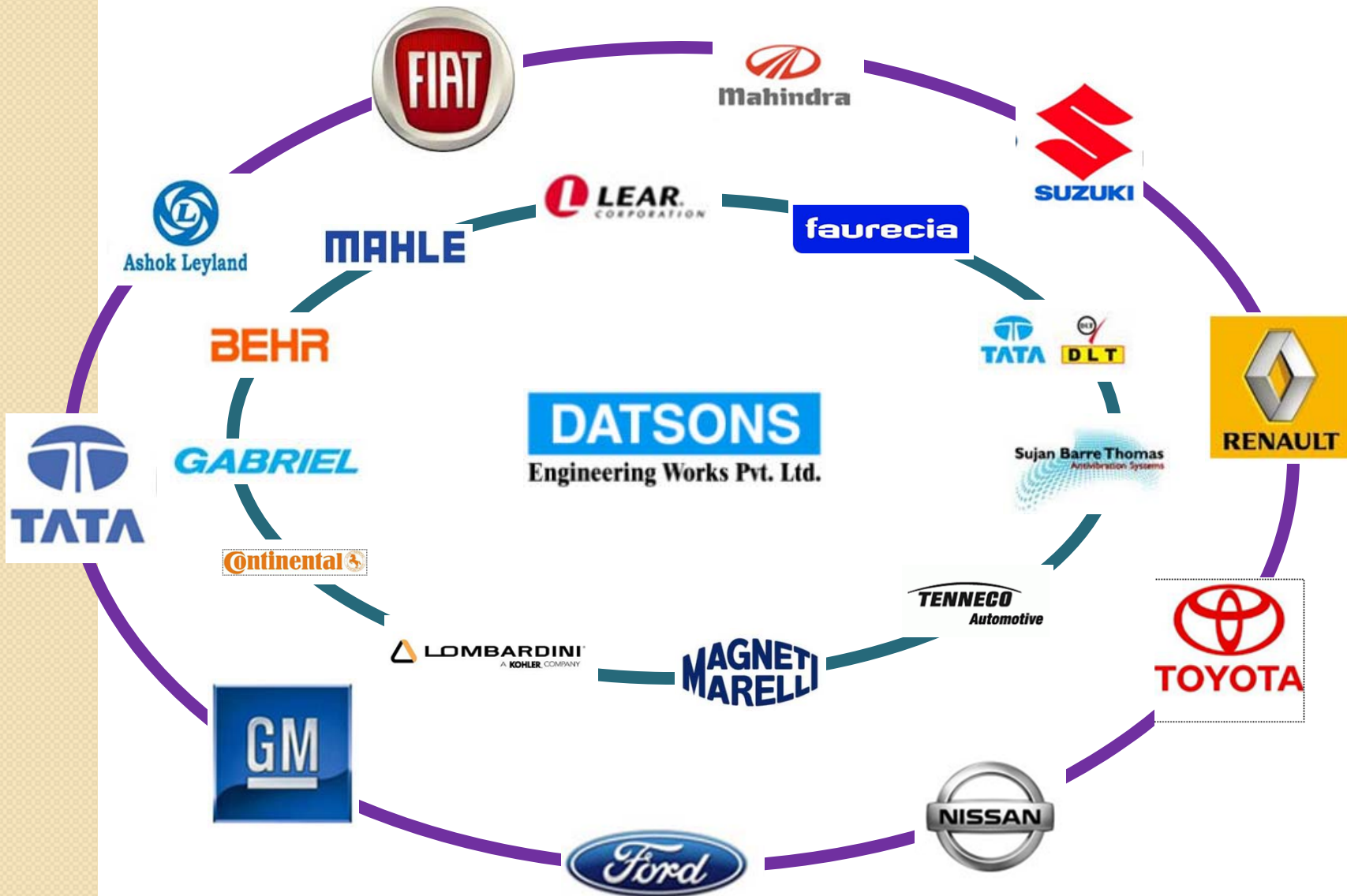
Customer :-  
**KAYABA**  
( We are Exporting to Spain )

**Re-Engineering ( Reverse Engg )**

## *CUSTOMERS- AUTO PRODUCTS*

1. *Tata Motors.*
2. *Gabriel India* (Anand Group )
3. *BEHR India* (Anand Group )
4. *Mahle Filter Systems ( I )* (Anand Group )
5. *Tenneco Automotive India.*
6. *Magneti Marelli*  
*Shock Absorbers (India)*
7. *SIEMENS VDO. ( Continental )*
8. *Lear Automotive.*
9. *Faurecia Emission Control*
10. *Lombardini India* (Kohler Group)
11. *Sujan Cooper Standards Avs Pvt Ltd.*

*Our Esteemed Customers*





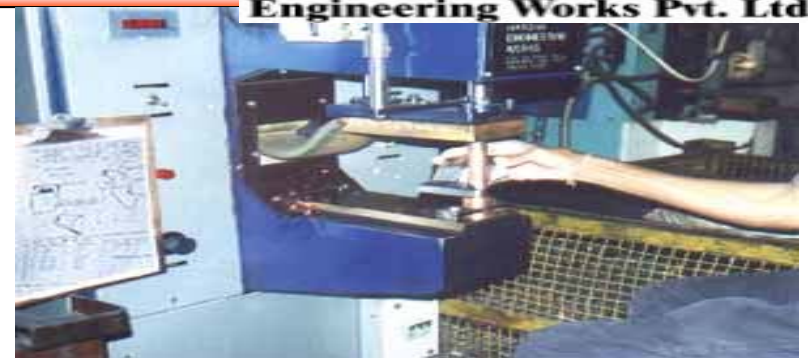
1	Power Press	400 T	1	AIDA
2	Power Press	350 T	1	SEW
3	Power Press	200 T	2	Ravi/ Mankoo
4	Power Press	150 T	13	Ravi / Mankoo
5	Power Press	100 T	6	Ravi / Punjab / OM Servo
6	Power Press	50 T	8	Punjab/ OM Servo
7	Hydraulic Press	65 T	1	Anchor Press
8	Shearing Machine	1500 x 5 mm	1	Ravi
9	Shearing Machine	2500 x 5 mm	1	Ravi

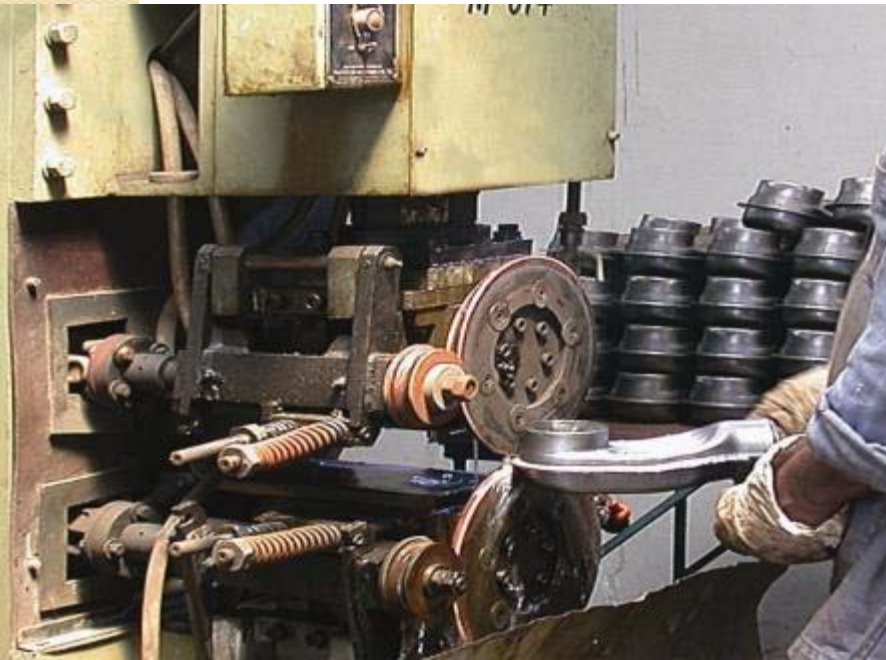


### Manufacturing Capability:-

MS- 0.4 to 8.0mm thk  
SS- 0.8 to 5.0mm thk  
Al – 1.0 to 4.0mm thk

10	Drilling Machine	¾ inches	1	Ravi
11	Surface Grinding Machine	-	1	Jhones & Shipman
12	CO <sub>2</sub> Welding	0-250 A	4	Advani
13	Spot Welding	25 K V A	1	-
14	Spot Welding	50 K V A	2	Kaje
15	Projection Welding Machine	50 K V A	1	Mechalonica
16	Projection Welding Machine	30 K V A	3	Artech / Sai Arc
17	Seam Welding Machine	50 K V A	1	Mechalonica
18	Milling machine	30 X 12 inches	1	Argo
19	Lathe Machine	14' Chuck 4 Ft bed	1	Rajkot





***Welding & Lathe Machineries***





*Shop Floor*

*Advance Measuring Equipment for 3D and 2D*



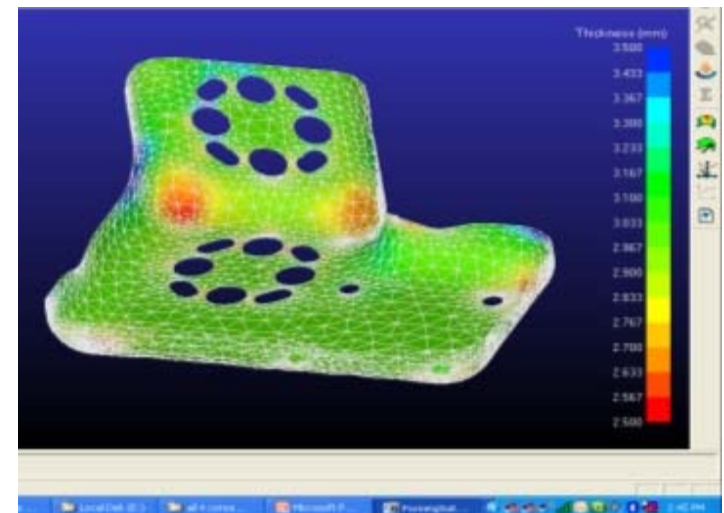
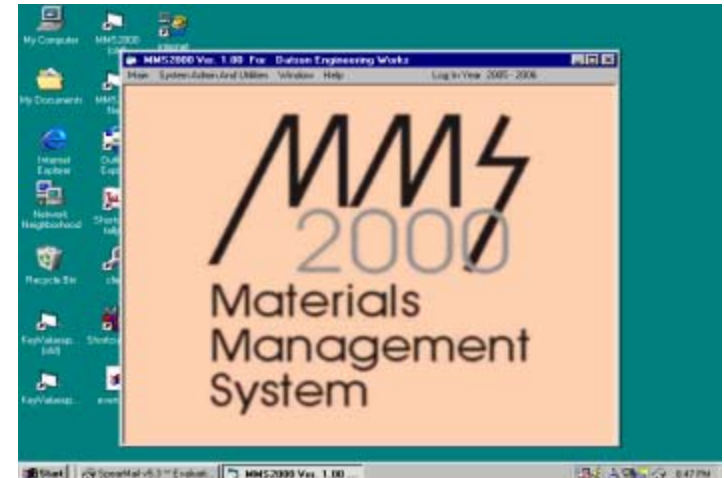


Datsons Engg. has implemented a specialized **MRP** software (**Materials Management System**) which integrates the various functions like Sales, Production, Procurement, Stores, Q.A. and Subcontractors.

Our Company is linked with various customers through **Value Chain Management (VCM)/ EDI facility** by Internet.

We use **TALLY** Software for financial accounting.

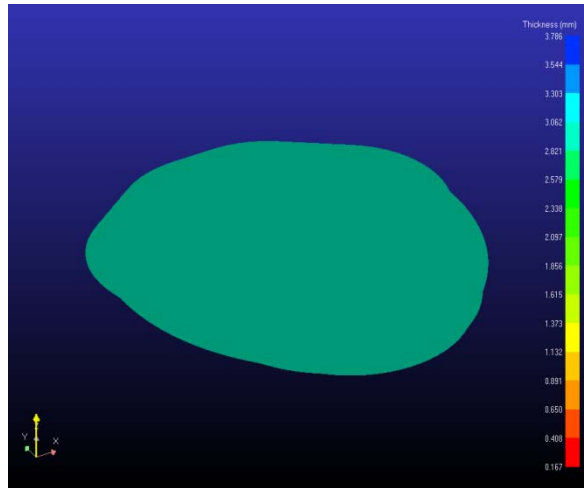
We are equipped with CAD facilities such as **CATIA V5** and **Forming Suit**. Whereas we also take help of professional agencies for our CAD / CAM needs.



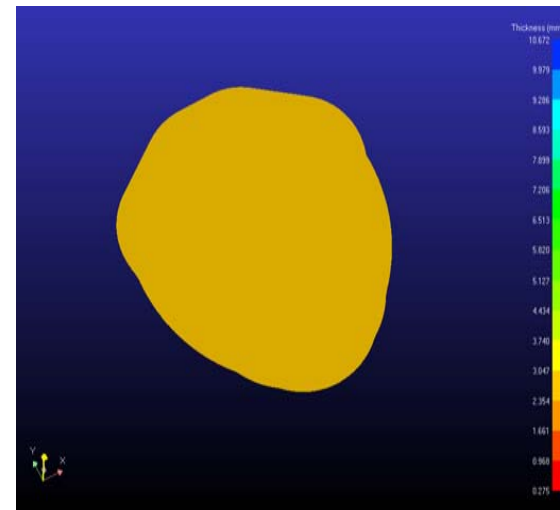
## CASE STUDIES

- Formability analysis-

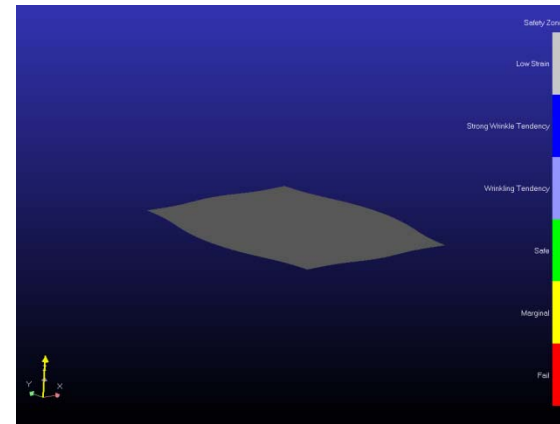
- Sq Blank-



Blank Shape changed-



- Slitting Added-



## *UNIT II*

- *PRODUCTS*
- *CUSTOMERS*
- *MACHINERIES*
- *FACILITIES*

# GENSET CANOPY



# ENCLOSERS / CABINETS





*Server Rack*



*SBI PANEL*





Customer :-  
**Honeywell Automation**  
( We are approved Source for  
global supply)



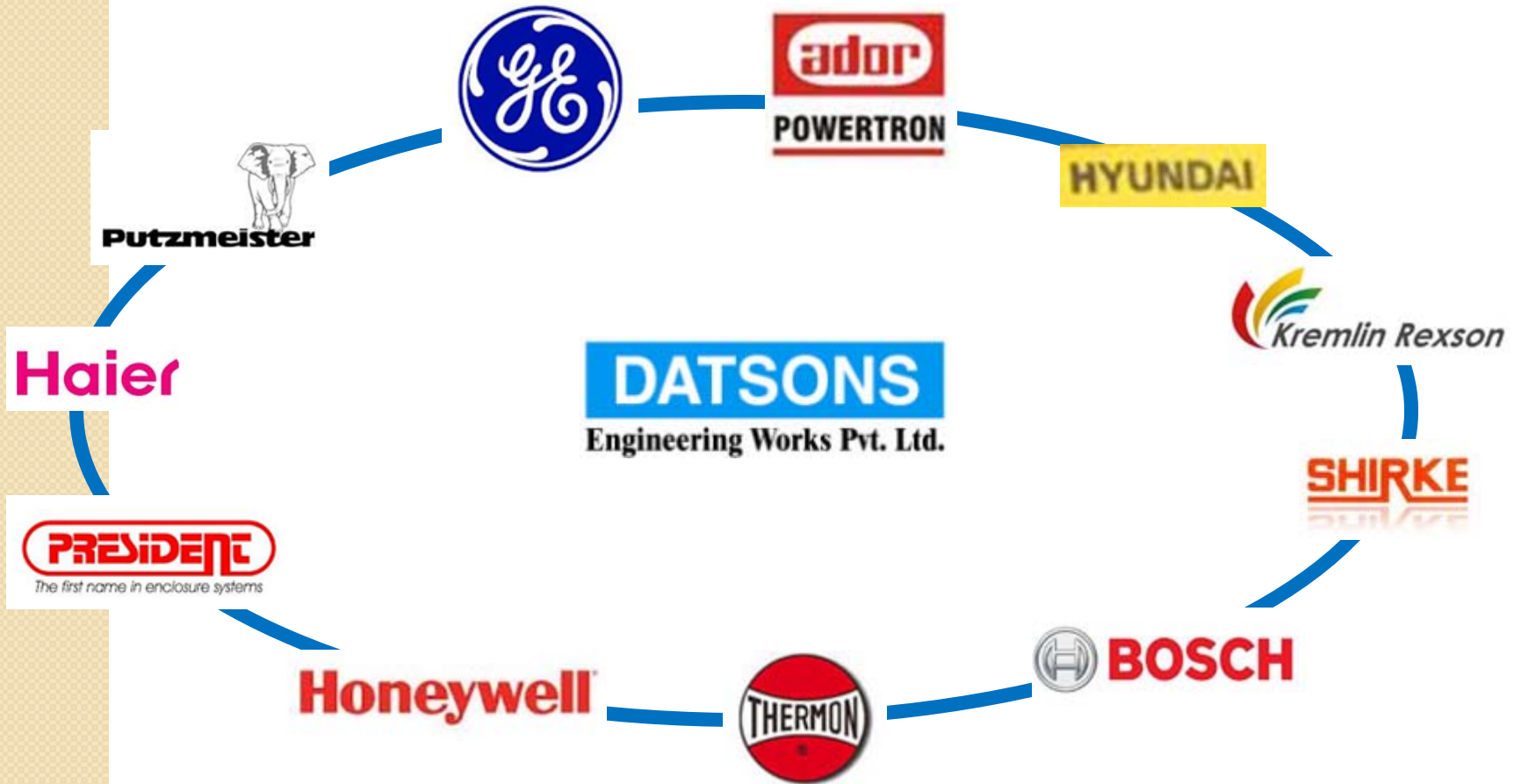
Customer :-  
**BELE DRAIN**  
( We are Exporting to Austria)



## *CUSTOMERS- NON AUTO PRODUCTS*

- 1. Hyundai*
- 2. Bosch*
- 3. BG Shirke*
- 4. DTL Ancillaries*
- 5. Tata International DLT*
- 6. Kremlin Raxon*
- 7. Universal- Sky Elevator*
- 8. Putzmeister, Goa*
- 9. APW President Systems.*
- 10. Ador Powertron*
- 11. Honeywell Automation*
- 12. Haier Appliances*
- 13. Thermon Heat Tracers Pvt Ltd.*
- 14. Uptime Infratel Services*

***Our Esteemed Customers***





*Laser Cutting*





***Turret Punching***

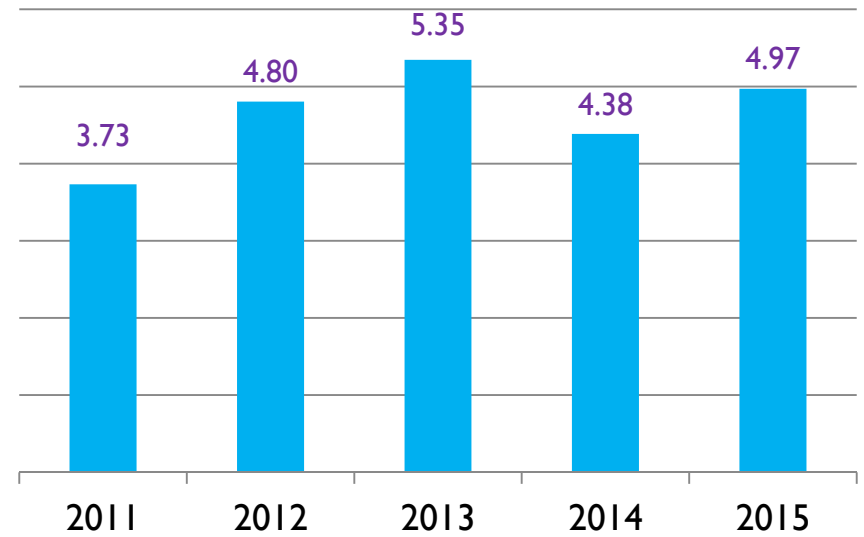




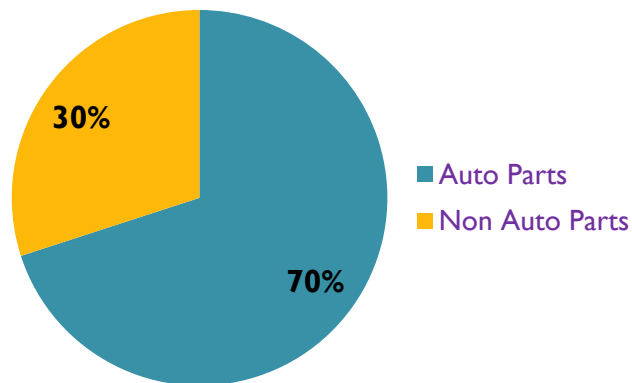
**Press Brake**

# ANNUAL SALES

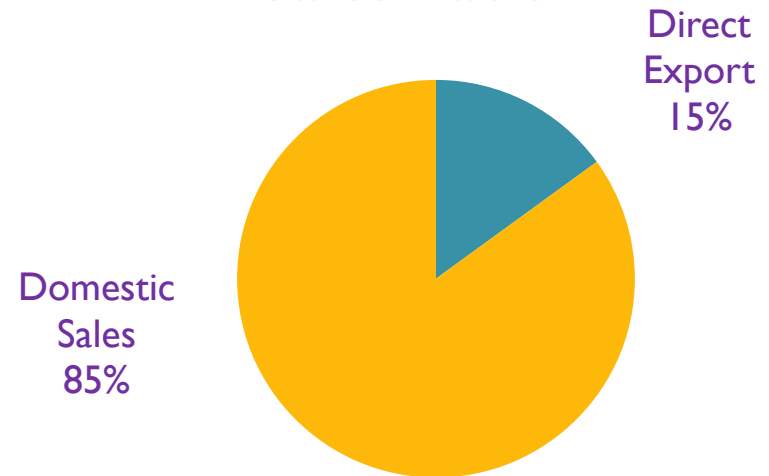
Year	Turnover In Euro/Million
2011	3.73
2012	4.80
2013	5.35
2014	4.38
2015	4.97



**Stake in Turnover**



**Sales Ratio**



## **EXPORT TO**

**1. Tenneco Automotive - Spain**



**2. GE Electrical (Regal Beloit) Mexico**



**3. Bele Drain System - Austria**



**4. Lucy Switchgear - Dubai**



**5. Kayaba - Spain**







*Thank You*